

LAB Resources

LAB Resources
706 Kopmeier Drive
Pewaukee, WI 53072

Phone: 262-691-3476 or 800-691-3476
Fax: 262-695-2504
Email: service@elabresources.com

www.elabresources.com

Please call LAB Resources for a copy of our 2005 Catalog! It is also available online.



Wireless Resources

Two new wireless resources use **radio frequency**—so they always work and **no longer depend on line of sight**.

The **Jelly Beamer** from AbleNet has just two components: the Jelly Beamer switch that houses a transmitter, and the Jelly Beamer receiver that can be plugged into any switch-adapted device, from battery operated toys and electric appliances to your classroom's digital camera or computer.

Each switch is uniquely paired with its receiver, allowing multiple

students to use their own Jelly Beamers at the same time, from as far away as 30-feet, without interfering with one another.

The Jelly Beamer is available in red, blue, green or yellow. Pricing is as follows:

1 - 2 switches **\$124.95** each
3 or more switches **\$ 94.95** each

The **USB Wireless Switch Interface** is an easy to set up wireless switch interface is the link between a single

switch and computer software. It uses radio frequency rather than line of sight so you don't have to worry about positioning it to point at the computer. It transmits up to 100 feet. This switch interface plugs into the USB port of a Windows or Macintosh computer. No additional USB software drivers are required. 1 to 5 switches are supported. Pricing is as follows:

USB Wireless Switch Interface **\$ 219.95**

Please call LAB Resources for more information.



LAB Notes

LAB Resources

Getting Up and Running with Assistive Technology Software

Once you've made the decision to purchase a software program for your students, the next step is to learn how to use that program. With a busy schedule, it can be difficult to make the time to learn all the features of a program and how to adapt it to meet the needs of your students.

LAB Lessons were created to help educators get up and running with selected assistive technology software programs. They are designed from the workshops we do and

guide the user through the program. They are bound, easy to understand, with colored screen shots. LAB Lessons are designed for busy educators to get them up and running as quickly as possible with software and have many educator tips.

If you are responsible for teaching the software to other educators in your district, our LAB Lessons tutorial CD allows you to print up to 30 copies of our tutorial.

If you would like to see a

sample of our tutorials, you can download our Quick Tips tutorial from our website, www.elabresources.com. Just click on **Tutorials and Training**, then choose **Download our Free Quick Tips for evaluation**.

LAB Resources is also available to provide workshops for you. We offer workshops on the software programs in our catalog. Please call LAB Resources at 262-691-3476 or 800-691-3476 for more information.



Winter 2006



We've Moved!

LAB Resources has moved to our new location. We are now combining all functions under one location, including inventory and shipping.

Please change your records to show our new location:

LAB Resources
706 Kopmeier Drive
Pewaukee, WI 53072



Our phone number and fax number remain unchanged.

Phone: 262-691-3476 or 800-691-3476
Fax: 262-695-2504

Inside this issue:

<i>Learn AT Software</i>	1
<i>Dragon Corner</i>	2
<i>Sentence Building</i>	3
<i>MEville to WEville</i>	3
<i>Wireless Solutions</i>	4



Dragon Corner

This regular column answers a commonly asked question about Dragon NaturallySpeaking

Question: How can I print the training text passages that a student reads aloud to set up his or her own voice file?

Answer: Educators frequently would like to familiarize a student with these passages before actually creating the voice file. Here is how to find and print this text.

1. Click on the **NaturallySpeaking** pull-down menu, choose **Manage Users**. Click **New**.

2. We are using this menu to access the training text – not create a new user.

However, Dragon

NaturallySpeaking doesn't know that and so you will still need to provide a user name in order to move through this wizard. In the example below, we have named it "print wav files"

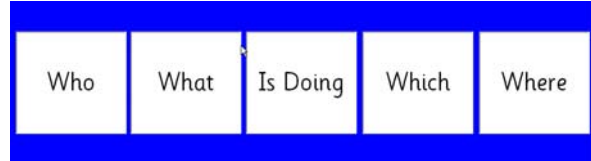
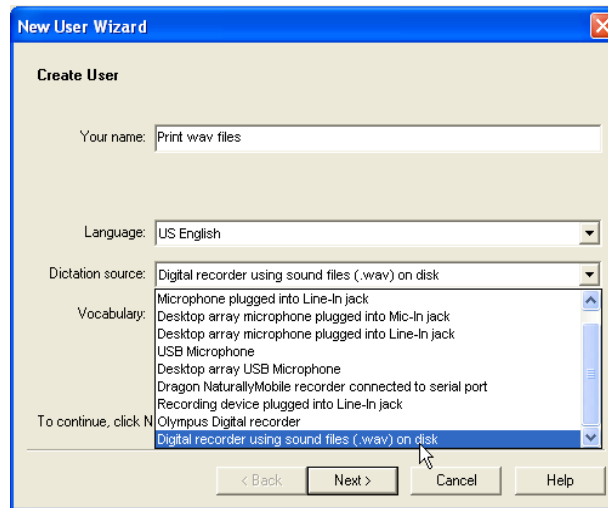
3. Change the **dictation source** to **Digital recorder using sound wav files**. Click **Next**.

4. Click **Next** again. You will see a variety of training texts. Choose the one you would like.

5. Click **Print**.

6. When you are finished printing, click **Cancel** since you are not really creating a new user file.

7. The next time you create a new user file, be sure to choose a microphone from the list that matches the one you will be using.



Building Sentences

Do you remember the Fokes Sentence Builder? The Fokes Sentence Builder was a set of boxes of pictures, categorized into parts of speech. It helped children build sentences.

With software programs such as Boardmaker Plus, Clicker or IntelliTalk 3, you can set up a grid of cells to represent different parts

of speech. Each "box" can layer to another grid—or depending on the program, you may be able to use pop-up grids. A student can be instructed to choose a noun from the "noun group", a verb from the "verb group", etc. Or, set it up Subject, Verb, Object.

After a student writes his sentence, he can listen to it and determine if the

sentence makes sense. You can create sentences around topics to meet a student's interests.

LAB Lessons are available for Boardmaker Plus and Clicker 4, priced at \$21.95 each. LAB Lessons for Clicker 5 is in progress and should be completed later this spring.

MEville to WEville Curriculum

If you work with students with cognitive disabilities in the moderate to severe range, it can be a challenge to adapt curriculum. MEville to WEville provides this adapted curriculum. It is research-based literacy curriculum designed for this moderate to severe population. It provides clear cut lessons plans to integrate augmentative communicating with lessons in reading, writing, speaking and listening.

The lesson plans use step-by-step instructions to help educators integrate curriculum goals with simple assistive technology. Lessons relate to real life. 3 units are available: Unit 1 "Me", Unit 2 "My Family" and Unit 3 "My School". Each unit includes a 300 page, spiral bound manual in full color, 75 lessons and 60 extension activities, one literature book, activity reproducible, and more.

One powerful feature of MEville to WEville is the action dictionary. Similar to a dictionary, it offers 3 to 5 ways an action can be completed with assistive technology.

Please call LAB Resources for our discounted pricing or for more information..

