

LAB Resources

LAB Resources
706 Kopmeier Drive
Pewaukee, WI 53072

Phone: 262-691-3476 or 800-691-3476
Fax: 262-695-2504
Email: service@elabresources.com

www.elabresources.com



Open House—September 30th!

LAB Resources will open an Open House on Friday, September 30th from 2:30 to 4:30 p.m. at our preview computer lab.

Our recycle bin is overflowing and we'd like to share these older software programs that we have taken out of our inventory with anyone who can use them.

You can also come to our Open House to preview a software program or to ask some questions. We will not be providing training, however, at the Open House.

Demo CDs will be available.

We'll have some refreshments—and hope you will be able to attend!

If you would like to attend, please call LAB Resources so we can have an idea of how many people to expect. Our number is 262-691-3476.

Our Open House will be held at our office at 161 W. Wisconsin Avenue, Suite 2G, Pewaukee.

Sept. 30th—2:30—4:30 p.m.

Please change your records to send all Purchase Orders, payments and other communication to this address:

LAB Resources
706 Kopmeier Drive
Pewaukee, WI 53072

Please call LAB Resources for a copy of our 2005 Catalog! It is also available online.

LAB Notes

LAB Resources

New ... this Fall!



LAB Resources is located in the Old Main Street Center across from Pewaukee Lake.

Let's take a look at 2 widely used AT software programs that have been updated this fall.

WYNN Wizard is a software program that allows the user to scan a book or other printed text and to then listen to it as it is read aloud. WYNN also provides a variety of electronic tools to help a student comprehend written material and to produce his or own written work.

WYNN 4, the updated version, has these new features:

- * Expanded ability for the user to work with his or her document in Exact View - to add text and voice notes to Exact View.
- * Higher quality AT&T voices have been added.
- * Documents can be converted to MP3 or WAV files so a user can listen to them away from the computer.
- * Updated spell checker.
- * New homophones

button.

- * Automatic saving of user settings when they are changed.

If you would like more information about the new WYNN 4, please call LAB Resources at 262-691-3476 or 800-691-3476.

Clicker is releasing Version 5
(continued on page 3)



Fall 2005

New! LAB Lessons for Kurzweil 3000, v9

LAB Lessons are now available for Kurzweil 3000, Version 9—Windows version. This 48 page bound tutorial is designed to help you get up and running quickly

with Kurzweil 3000. Colored graphics and screen shots supplement clear instructions. Educator notes throughout the tutorial provide specific additional

suggestions for educators. The price of the printed, bound version of our tutorial is \$21.95.

If you need multiple

Cont'd on page 3

Inside this issue:	
<i>New...for Fall!</i>	1
<i>LAB Lessons for Kurzweil 3000</i>	1
<i>Dragon Corner</i>	2
<i>Open House</i>	4



Dragon Corner

This regular column answers a commonly asked question about Dragon NaturallySpeaking

Question: I want to use Dragon NaturallySpeaking with my students, but my school district uses a computer protection program to keep the hard drive from being changed. What can I do?

Answer: Dragon NaturallySpeaking needs continual access to the hard drive so that it can update a user's voice file as he or she dictates. When a program such as Deep Freeze (which protects the hard drive from being changed by students) is also running, Dragon NaturallySpeaking will not function. One option is to turn Deep Freeze off when using speech recognition software. However, many districts are reluctant to do this.

Another option is to use Dragon NaturallySpeaking Professional Edition. Unlike the Preferred and Standard Editions, the Professional Edition has a Roaming User feature. With the Roaming User feature, the voice file is stored on the server and is available anywhere on the network on computers running Dragon NaturallySpeaking. The voice file can then be continually changed as the user dictates independent of the computer's hard drive.

The Professional Edition does cost more than the Preferred Edition. The list price is \$795 and the school/gov't price is \$649.95. However, this price can be reduced to \$382 per license when a school purchases 4 or more licenses — by taking advantage of the Open License Program. The Open License program is available through LAB Resources.

The Open License Program is a volume purchasing program designed to reduce the cost for organizations to obtain software without the higher expenses of boxed products. You will receive a license certificate, a single CD and manual, plus a microphone for each license purchased. There are no contracts to sign or purchase requirements beyond the initial purchase, although you can continue to add to your license at your purchasing level for 2 years, meeting minimum order requirements.

The Professional Edition also is the only edition that will work with Microsoft PowerPoint and Outlook. It provides the ability to save the audio file with text dictation so that educators can help students correct their work at a later time. Multiple custom vocabularies can be created to increase dictation accuracy. For example, vocabularies can be created for multiple subjects so a student can switch from a social studies vocabulary to a science vocabulary all within the same user file.

LAB Resources is an authorized Value Added Reseller for Dragon NaturallySpeaking. We provide training, support and have created our own tutorials. Please call LAB Resources for more information (262-691-3476 or 800-691-3476).

New LAB Lessons, continued from page 1

quantities for an in-service, we offer our tutorial CD. This CD contains a PDF version of our tutorial and the license to print up to 30 copies. Pricing is \$129.95.

- Boardmaker/Speaking Dynamically Pro for Windows
- Clicker
- Dragon NaturallySpeaking
- Read & Write Gold
- WYNN

LAB Resources also offers tutorials for these software programs:

- Boardmaker for Windows



New ... this fall! continued from page 1

this fall. Clicker is a talking word processing program that incorporates grids so children can write with pictures, whole words and/or phrases.

Clicker 5 has these new features:

- * Pop-up grids. Pop-up grids are small grids that open on top of the current grid and provide additional word choices. Also useful for labeling
- * New, natural speech.
- * New editing mode. Clicker 5 is easier to use and it is easier to create activities.
- * New Clicker Explorer makes it easier to find and save files.

Clicker is a versatile program. It can be used for sentence building or to provide a student with a word banks containing just the more difficult words. Educators and students can create talking books. You can type and have pictures appear. Grids can be stored in a sequence, providing a writing or story frame. Clicker is fully switch accessible for students unable to use a mouse or keyboard.

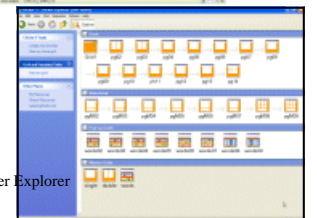
If you have any questions, or would like additional information, please call LAB Resources (262-691-3476 or 800-691-3476).



Clicker Screen with Grids



Pop-up Grid



New Clicker Explorer